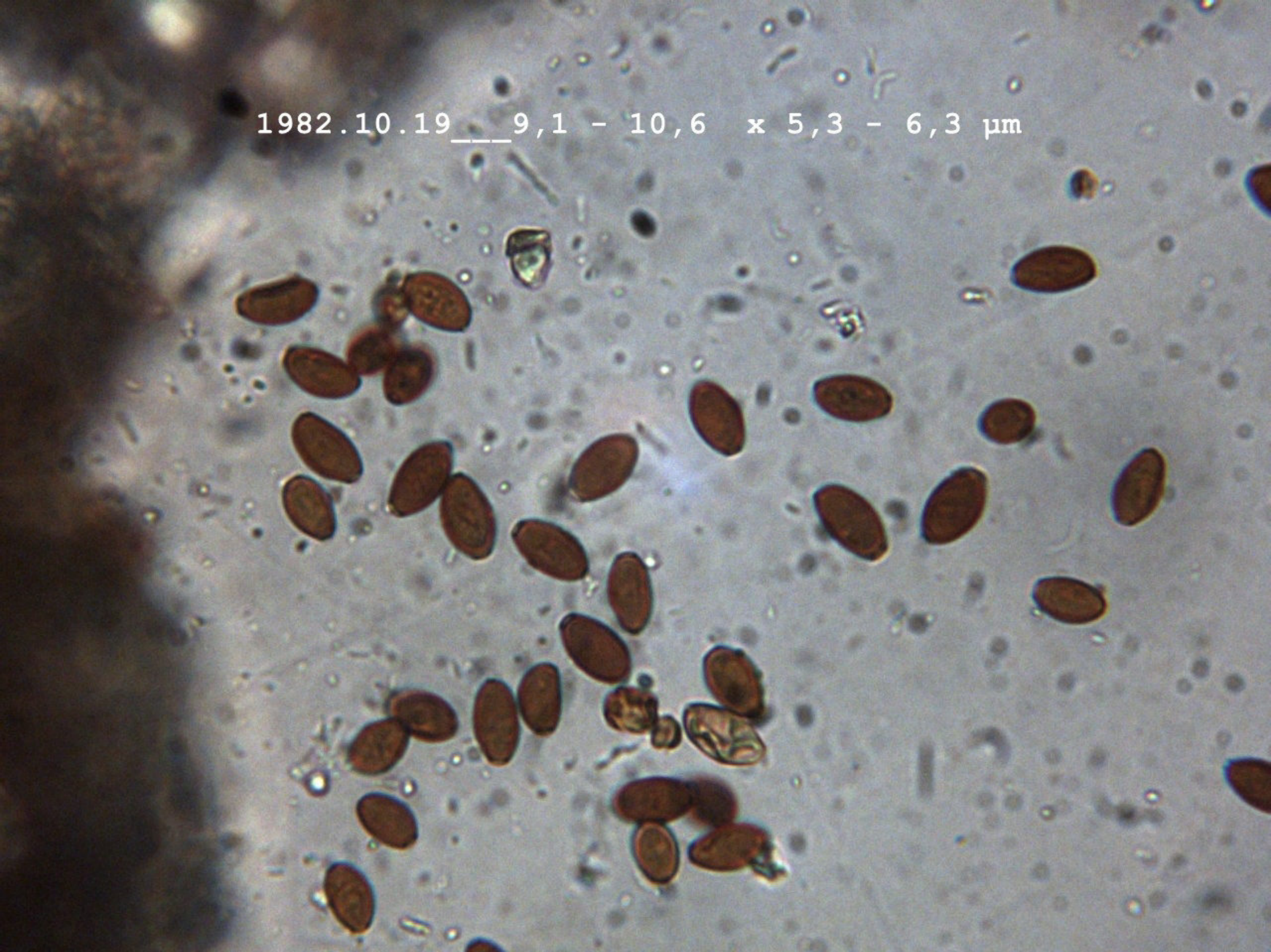

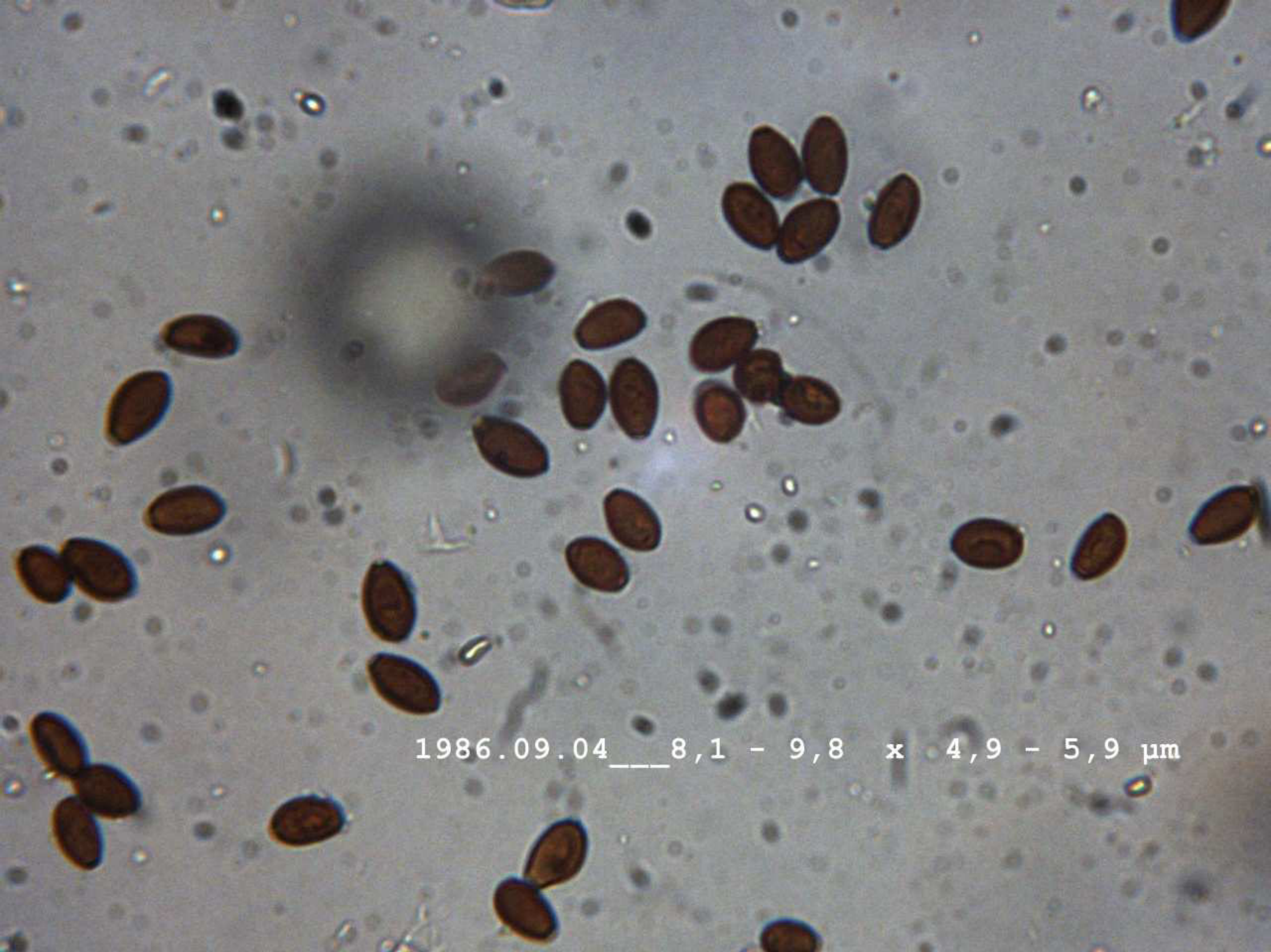


1982.10.19 \_\_\_ 9,1 - 10,6 x 5,3 - 6,3  $\mu\text{m}$

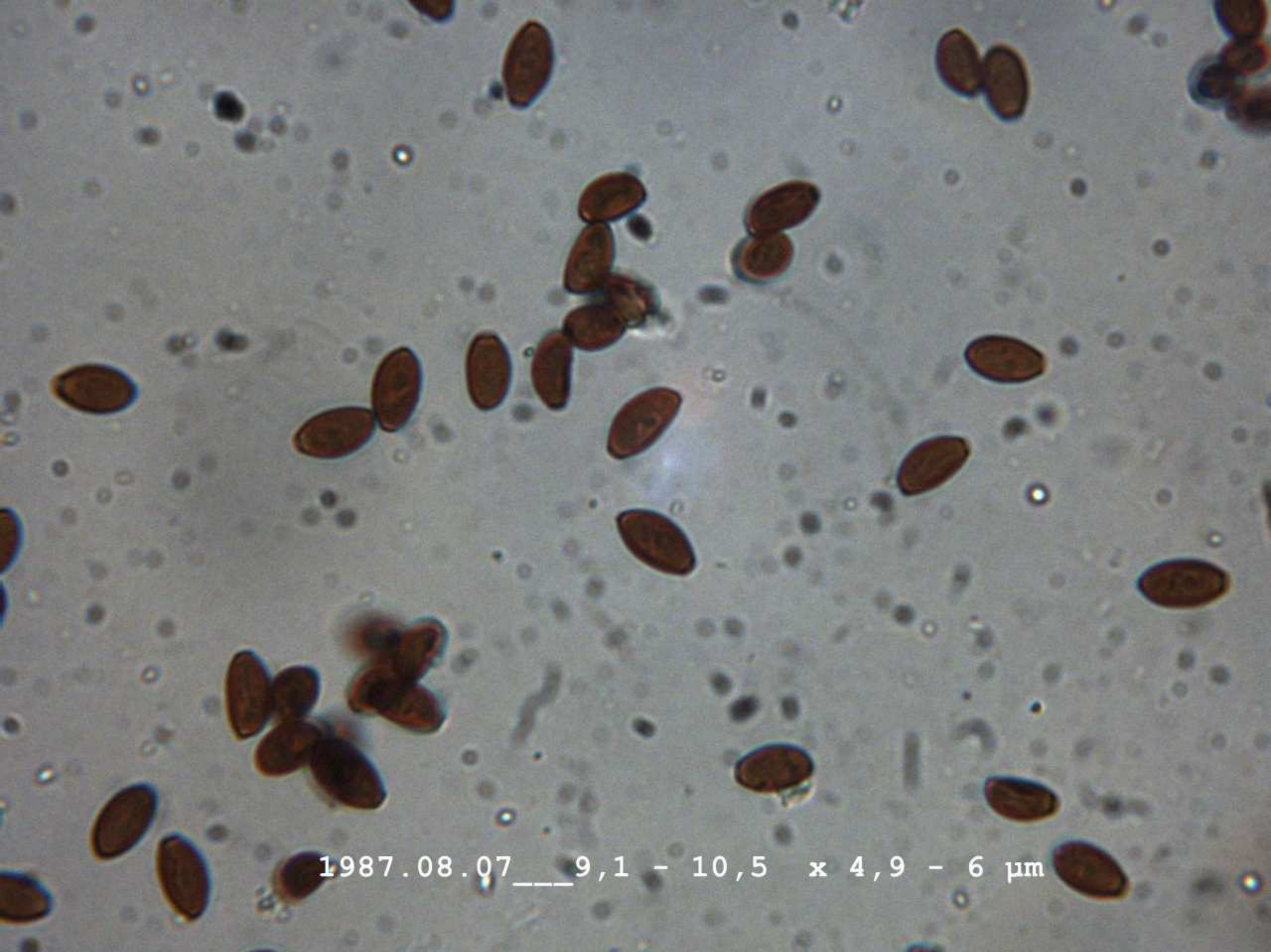


A microscopic image showing numerous dark, oval-shaped spores or eggs scattered across a light-colored, textured background. The spores are elongated and have a smooth surface. Some are clustered together, while others are isolated. The background has a fine, granular texture and some faint linear structures.

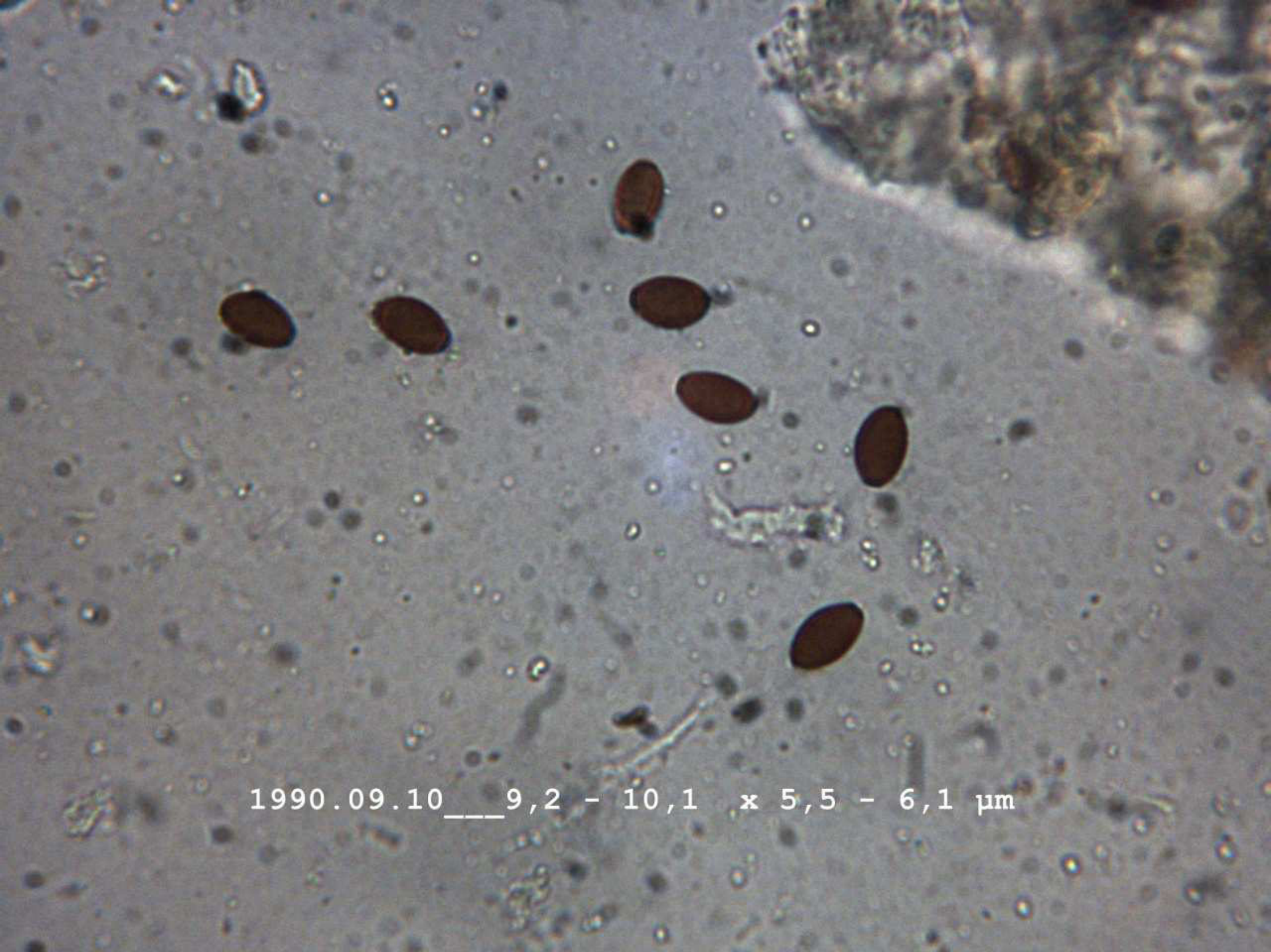
1985.06.23 \_\_\_ 11,3 - 13,3 x 6,3 - 6,6  $\mu\text{m}$



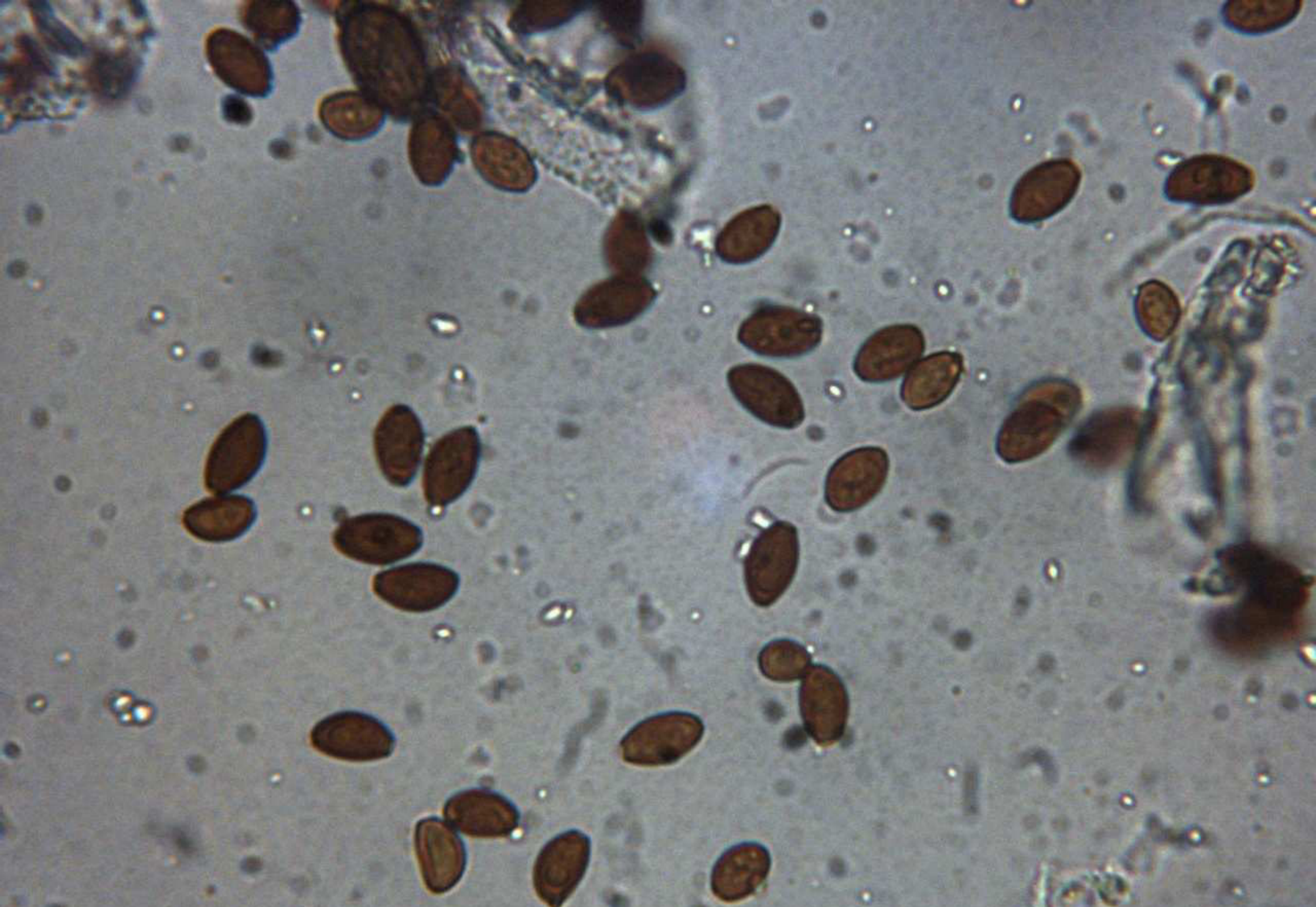
1986.09.04 \_\_\_ 8,1 - 9,8 x 4,9 - 5,9 μm



1987.08.07 \_\_\_ 9,1 - 10,5 x 4,9 - 6 μm



1990.09.10 \_\_\_ 9,2 - 10,1 x 5,5 - 6,1  $\mu\text{m}$



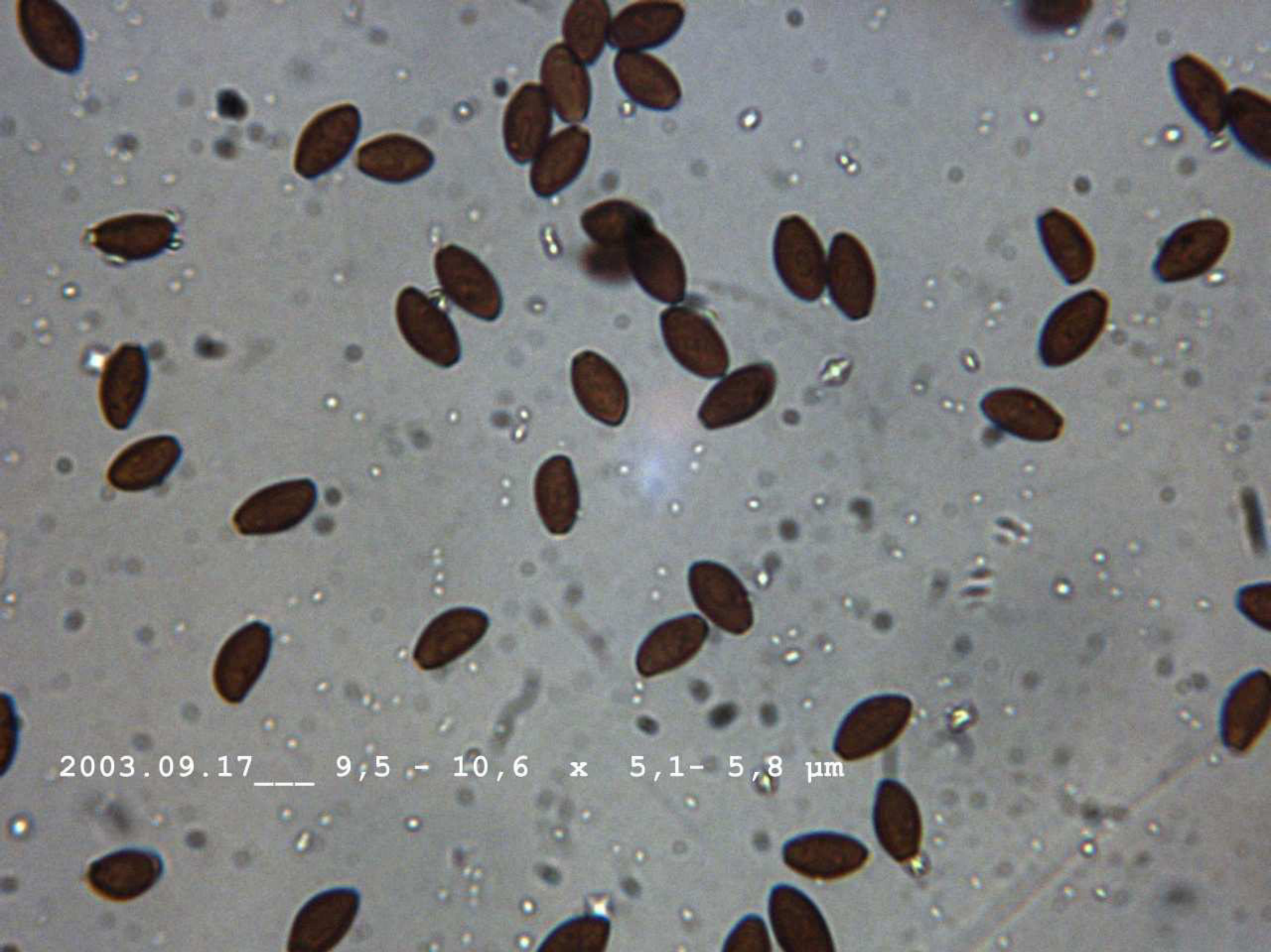
1992.09.12 \_\_\_ 8,7 - 10 x 5,2 - 5,7 μm

A micrograph showing a large number of dark, oval-shaped spores or eggs scattered across a textured, reddish-brown background. The spores are uniform in size and shape, with some appearing in small clusters. The background has a fibrous or cellular appearance.

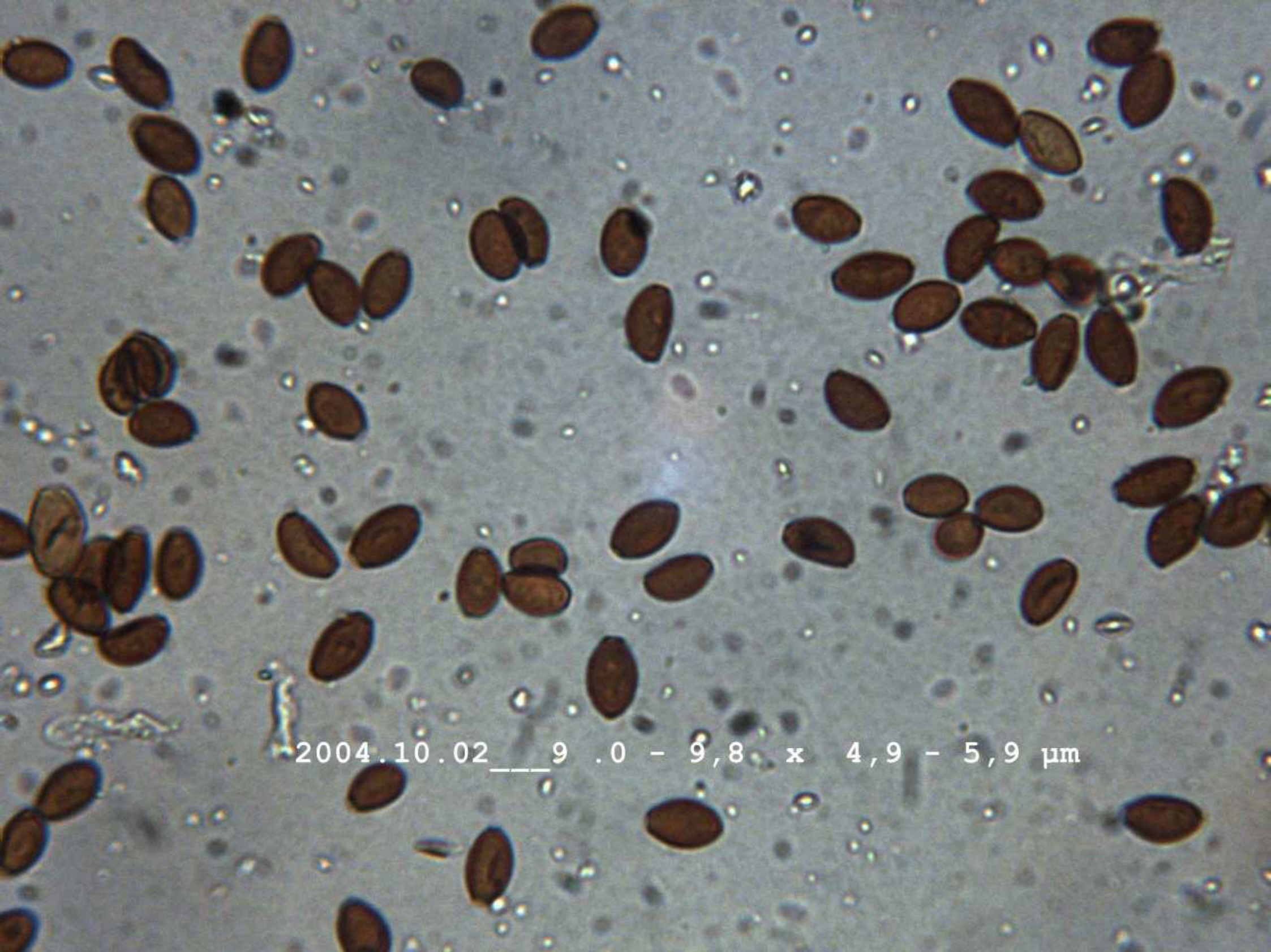
1994.08.24 \_\_\_ 8,8 - 11,1 x 4,8 - 5,6  $\mu\text{m}$



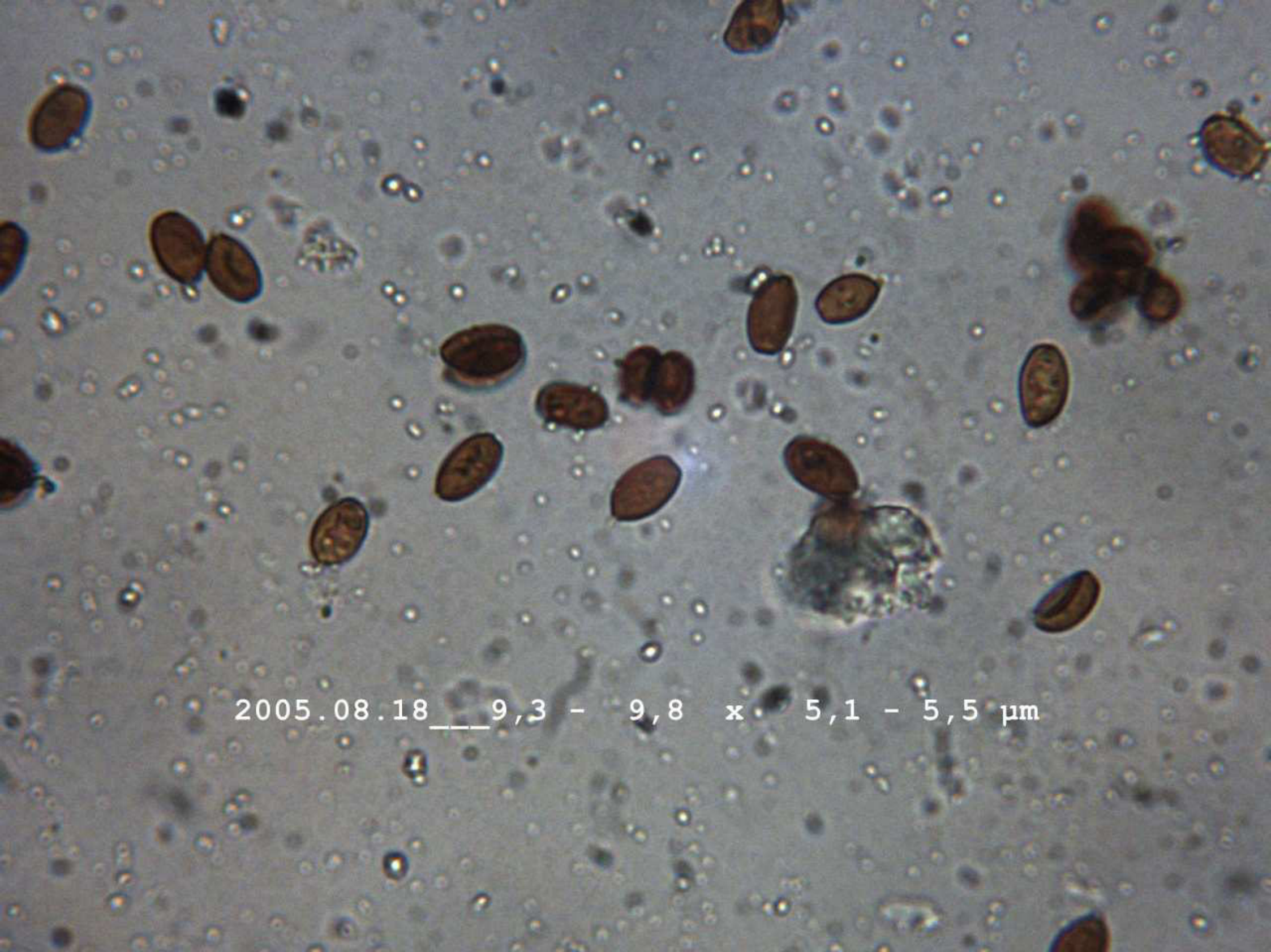
1994.09.03 \_\_\_ 9,9 - 11,2 x 6 - 6,3 μm



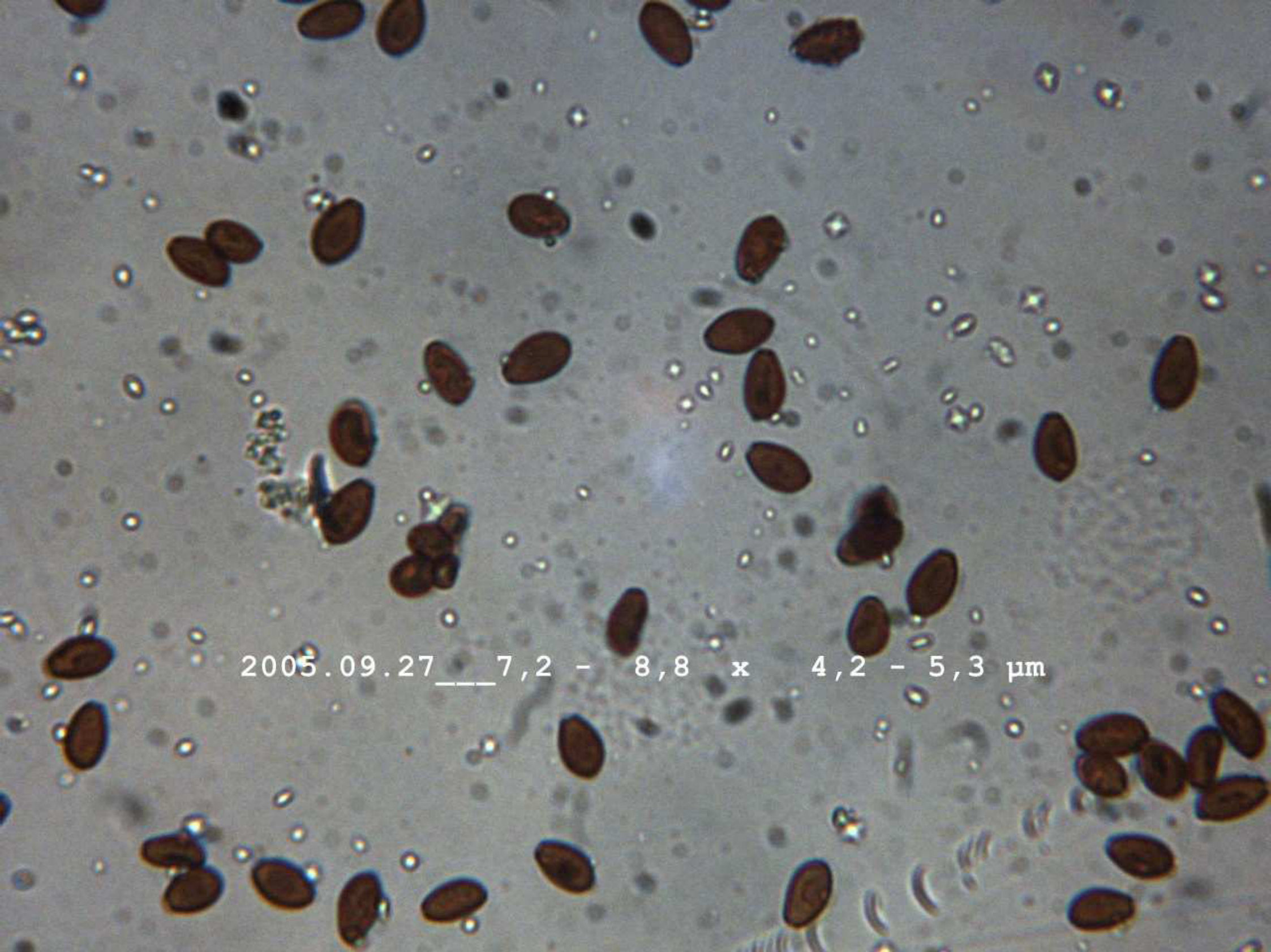
2003.09.17 \_\_\_ 9,5 - 10,6 x 5,1- 5,8 μm



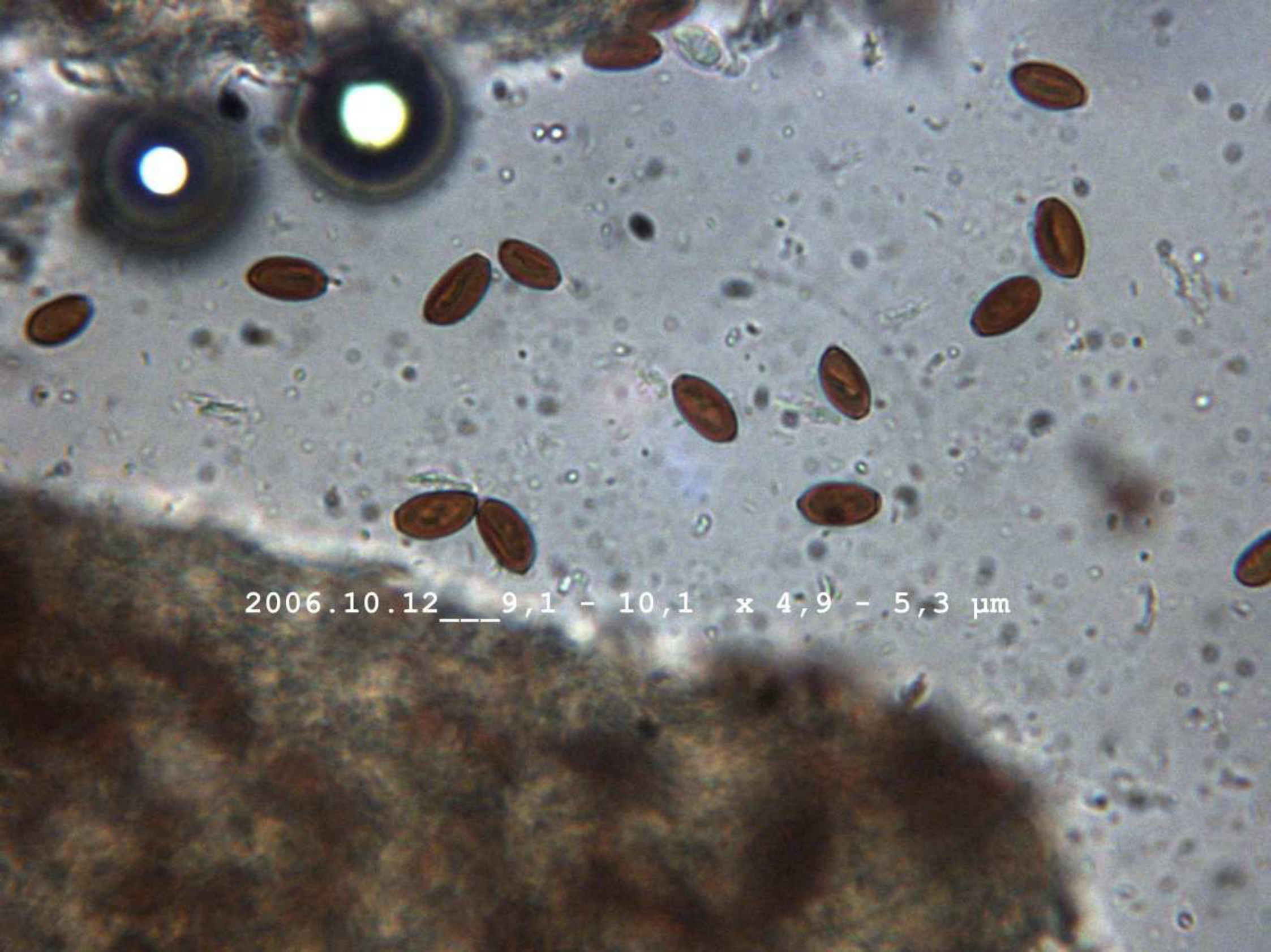
2004.10.02 \_\_\_\_ 9 .0 - 9,8 x 4,9 - 5,9 μm



2005.08.18 9,3 - 9,8 x 5,1 - 5,5  $\mu\text{m}$



2005.09.27 \_\_\_ 7,2 - 8,8 x 4,2 - 5,3 μm



2006.10.12 \_\_\_ 9,1 - 10,1 x 4,9 - 5,3  $\mu\text{m}$