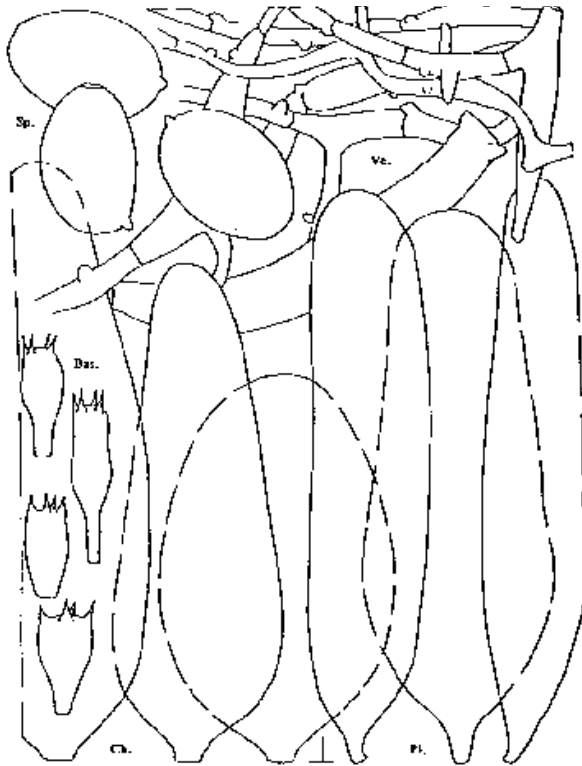


## **Coprinus picaceus (Bull.: Fr.) S.F. Gray - (NL: Spechtinktzwam, 026.55.0)**

*Coprinus picaceus* (Bull.: Fr.) S.F. Gray, *Nat. Arr. Br. Pl. I* (1821) 634.

*Agaricus picaceus* Bull.: Fr., *Syst. mycol. I* (1821) 308.

Selected icons. Anonymous, *Mycologist* 6 (1992) 15; Breitenb. & Kränzl., *Pilze Schweiz* 4 (1995) 246, pl. 297; Jamoni, *Funghi Ambiente* 47 (1988) between 16 and 17, pl. 118; Phillips, *Mushr. other Fungi* (1981) 178.



[Copy



[Copyright ©

**Macroscopic features** Pileus 20-70 x 15-40 mm when still closed, ellipsoid or ovoid, first covered with whitish, soon pale greyish or beige, cream-beige, later beige, greyish ochre or ochre-brown veil, breaking up in patches. Lamellae very crowded, free, first whitish, then brownish, later grey-brown to dark grey, finally black. Stipe up to 300 x 6-15 mm, slightly attenuate upwards, white or grey-white, minute woolly fibrous, in particular at base.

**Microscopic features** Spores [120,6,4] 14.0-18.8 x 9.6-13.0  $\mu\text{m}$ , ellipsoid or ovoid, rounded at apex, very dark brown, almost black, with central, c. 2.5  $\mu\text{m}$  wide germ pore;  $Q = 1.25-1.60$ , av.  $Q = 1.35-1.50$ ; av.  $L = 14.7-16.9$ , av.  $B = 10.7-11.6$   $\mu\text{m}$ . Basidia 16-46 x 12-15  $\mu\text{m}$ , 4-spored, surrounded by 5-8 pseudoparaphyses. Pleurocystidia 100-165 x 28-50(-60)  $\mu\text{m}$ , utriform, cylindrical, conical or ellipsoid. Cheilocystidia 80-150 x 24-50  $\mu\text{m}$ , utriform, broadly utriform, ellipsoid or conical. Elements of veil thin-walled, diverticulate, up to c. 100(-175) x (3-)5-14(-18)  $\mu\text{m}$ . Clamp-connections present.

**Habitat & distribution** Solitary or a few together, on calcareous soil or chalky loam, mainly in *Fagus* forests. Rare but widespread in Europe. In the Netherlands only known from the valley of the river IJssel.

**Remarks** The very large spores with a breadth of 10-13  $\mu\text{m}$  in addition to the habitat not on dung are the salient features of *Coprinus picaceus*. All species in subsect. Alachuani, except for *Coprinus picaceus* and [C.](#)

***sclerotiorum*** (growing on sclerotia in dung), have spores whose breadth is always less than 10  $\mu\text{m}$ . The macroscopically similar ***Coprinus stanglianus*** and ***C. kimurae*** can readily be distinguished on spore size.